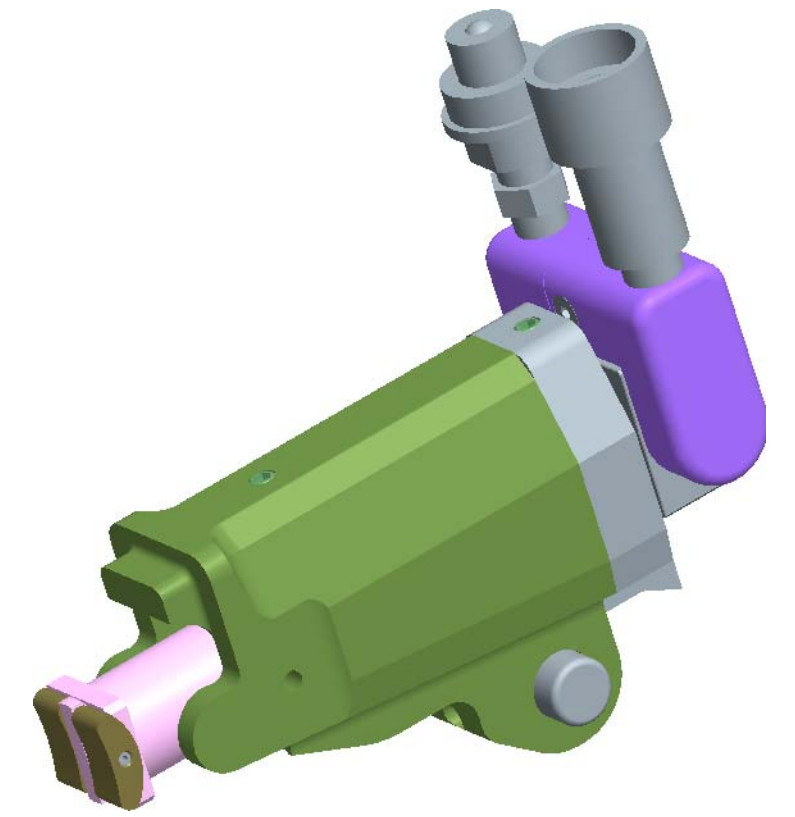
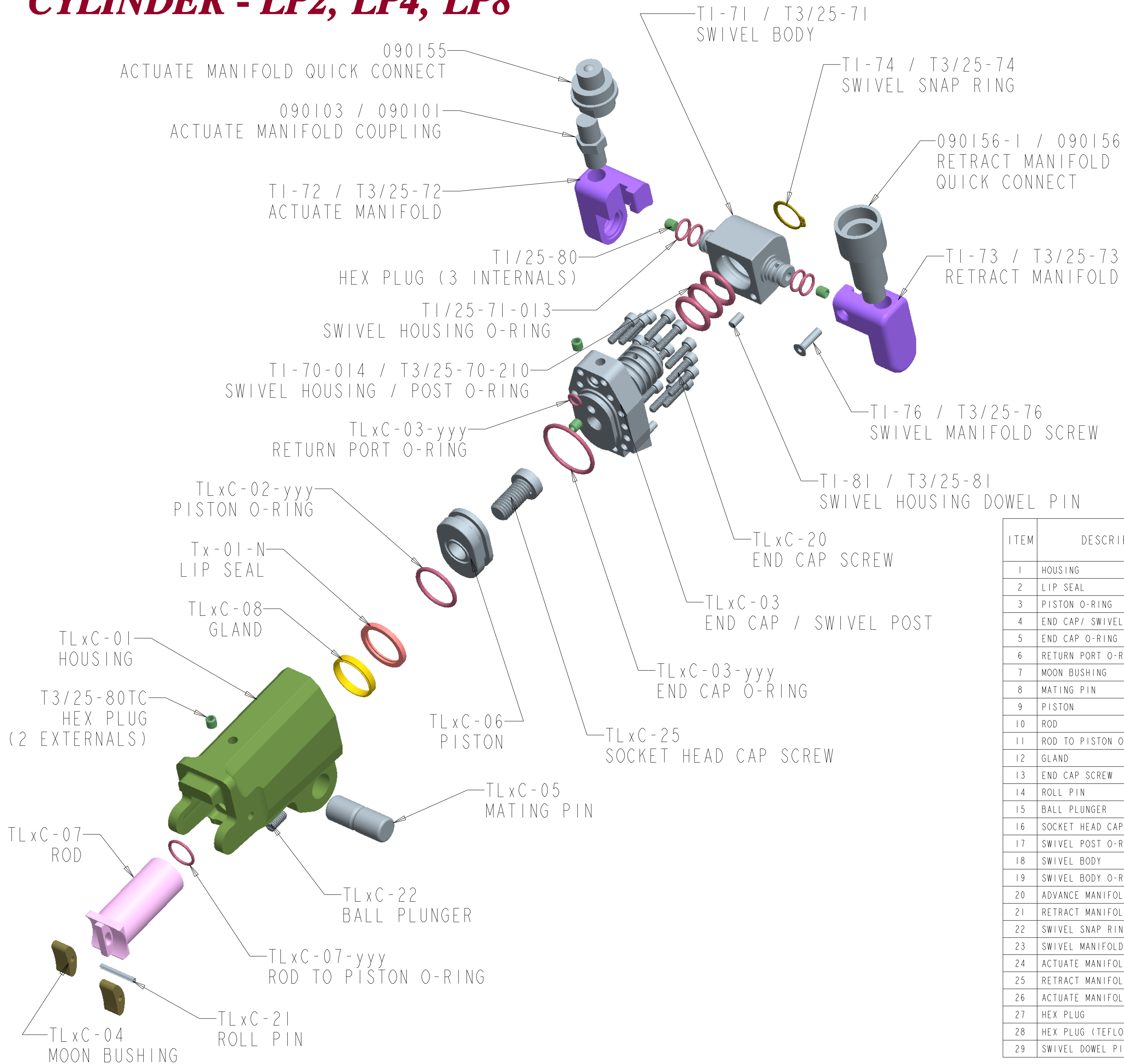


TITAN TECHNOLOGIES INTERNATIONAL, INC.

CYLINDER - LP2, LP4, LP8



ITEM	DESCRIPTION	QTY	PART NUMBER		
			LP2	LP4	LP8
1	HOUSING	1	TL2C-01	TL4C-01	TL8C-01
2	LIP SEAL	1	T1-01-N	T3-01-N	T5-01-N
3	PISTON O-RING	1	T3/25-70-120	TL4C-02-218	T5-25-223
4	END CAP / SWIVEL POST	1	TL2C-03	TL4C-03	TL8C-03
5	END CAP O-RING	1	T3/25-70-120	TL4C-03-125	T5-25-223
6	RETURN PORT O-RING	1	TL2C-03-007	T3/25-70-010	
7	MOON BUSHING	2	TL2C-04	TL4C-04	TL8C-04
8	MATING PIN	1	TL2C-05	TL4C-05	TL8C-05
9	PISTON	1	TL2C-06	TL4C-06	TL8C-06
10	ROD	1	TL2C-07	TL4C-07	TL8C-07
11	ROD TO PISTON O-RING	1	T1/25-71-013	TL4/8C-07-016	
12	GLAND	1	N/A	TL4C-08	TL8C-08
13	END CAP SCREW	14	TL2C-20	TL4C-20	TL8C-20 (16)
14	ROLL PIN	1	TL2C-21	TL4C-21	T10-40-41-42
15	BALL PLUNGER	1	TL2C-22	TL4/16C-22	
16	SOCKET HEAD CAP SCREW	1	TL2C-25	TL4C-25	TL8C-25
17	SWIVEL POST O-RING	3	T1-70-014	T3/25-70-210	
18	SWIVEL BODY	1	T1-71	T3/25-71	
19	SWIVEL BODY O-RING	4	T1/25-71-013		
20	ADVANCE MANIFOLD	1	T1-72	T3/25-72	
21	RETRACT MANIFOLD	1	T1-73	T3/25-73	
22	SWIVEL SNAP RING	1	T1-74	T3/25-74	
23	SWIVEL MANIFOLD SCREW	1	T1-76	T3/25-76	
24	ACTUATE MANIFOLD COUPLING	1	090103	090101	
25	RETRACT MANIFOLD QD	1	090156-1	090156	
26	ACTUATE MANIFOLD QD	1	090155		
27	HEX PLUG	3	T1/25-80		
28	HEX PLUG (TEFLON COATED)	2	T3/25-80TC		
29	SWIVEL DOWEL PIN	2	T1-81	T3/25-81	